

Replanted Corn Fields Catching Up

R.L. (Bob) Nielsen
 Agronomy Department
 Purdue Univ., West Lafayette, IN
 Email: rnielsen@purdue.edu

The ragged tall/short corn appearance of the hundreds, if not thousands, of Indiana fields that were partially replanted back in late May and early June following the atrocious emergence of most anything planted from May 5 through May 10 have dogged growers' outlooks on life ever since. Many of those replanted areas are finally coming into the pollination period; later than desired but earlier than might be expected given the difference in planting dates between the original and replanted parts of the fields.

As I pointed in an earlier article (Nielsen, 2006), later planted corn tends to “catch up” by moving through parts of its life cycle more quickly. The accompanying graph depicts the decrease in number of days from planting to silking for three hybrids planted across a range of dates in west central Indiana in 2006 (Fig. 1).

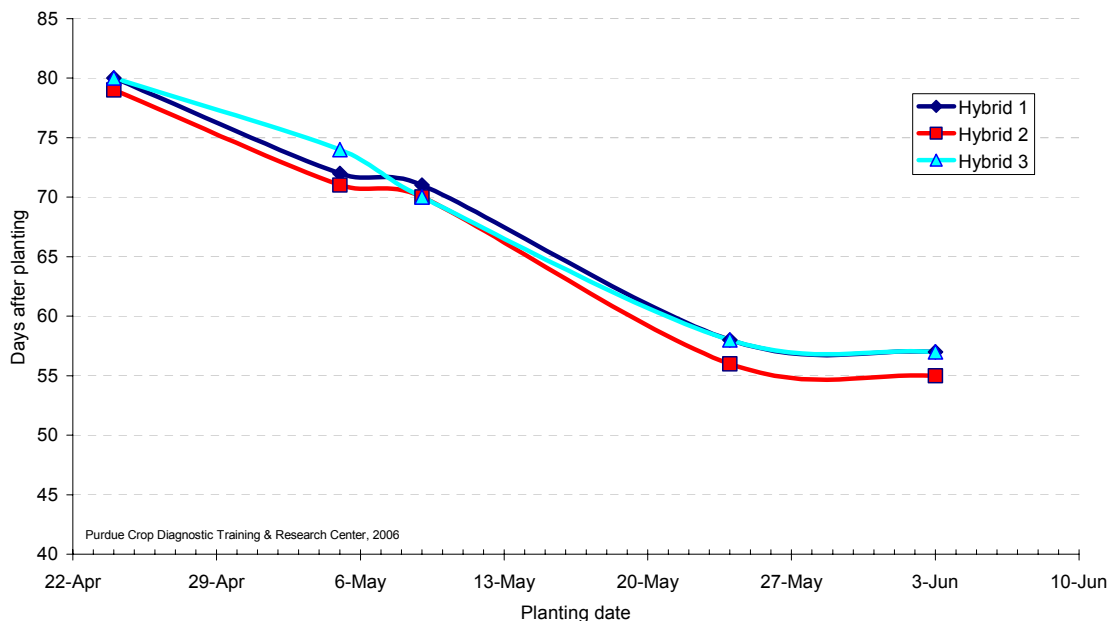


Fig. 1. Days from planting to 50% silk emergence for three corn hybrids planted across a range of dates in west central Indiana, 2006.

All three hybrids planted May 5 at the beginning of the so-called “evil planting window” flowered 71 – 74 days later in mid-July. The same three hybrids planted 29 days later on June 3 were flowering late last week (late July); only 55 – 57 days after planting.

Even though the two planting dates varied by 29 days, the silking dates only varied by 12 to 14 days. Obviously, two weeks difference in flowering within a field still represents the potential for significant grain moisture differences at harvest. However, because late-planted corn “catches up” to a degree, the grain moisture differences will not be as large as some growers may have originally feared.

Thanks to Greg Bossaer, Purdue White Co. Extension, for triggering the notion for this article.

Related References

Nielsen, R.L. (Bob). 2006. **Late Planting/Replanting & Relative Hybrid Maturity.** Corny News Network, Purdue Univ. Online at <http://www.kingcorn.org/news/articles.06/HybridMaturity-0516.html> [URL verified 7/31/06].

Don't forget, this and other timely information about corn can be viewed at the Chat 'n Chew Café on the Web at <http://www.kingcorn.org/cafe>. For other information about corn, take a look at the Corn Growers' Guidebook on the Web at <http://www.kingcorn.org>.

© 2006, Purdue University

It is the policy of the Purdue University that all persons shall have equal opportunity and access to its programs and facilities without regard to race, color, sex, religion, national origin, age, or disability. Purdue University is an Affirmative Action employer. This material may be available in alternative formats.